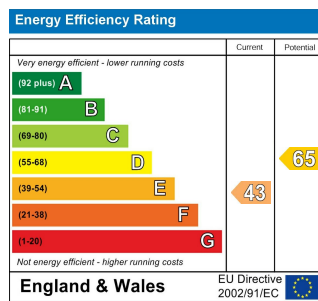


Council Tax Band B  
Local Authority London Borough of Croydon

Agents Note: Whilst every care has been taken to prepare these particulars, they are for guidance purposes only. All measurements are approximate and are for general guidance purposes only and whilst every care has been taken to ensure their accuracy, they should not be relied upon and potential buyers/tenants are advised to recheck the measurements.



306 London Road  
Croydon  
Surrey  
CR0 2TJ

  
CROYDON CREST  
PROPERTY SERVICES  
info@croydoncrest.co.uk  
020 8664 9324  
croydoncrest.co.uk



1 Bedrooms

Flat

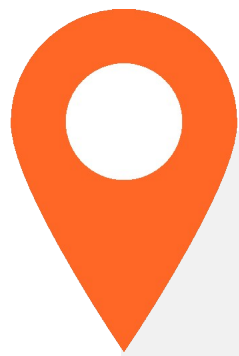
£1,300

Located In

South Croydon



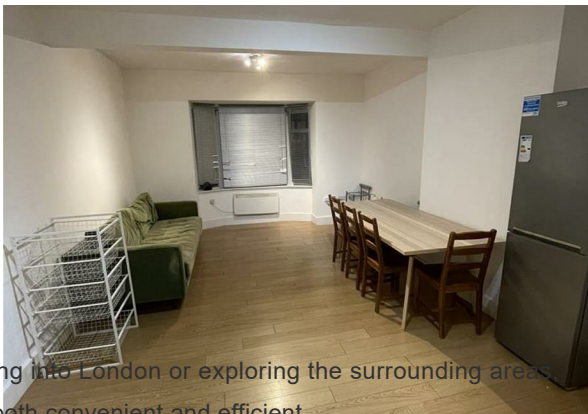
croydoncrest.co.uk



# Flat 1 Queens Mansion 6a Brighton

South Croydon | Surrey | CR2 6AA

£1,300



commuting a breeze. Whether you are heading into London or exploring the surrounding areas, you will find that access to public transport is both convenient and efficient.

Additionally, the flat is situated close to a variety of local amenities, including shops, cafes, and restaurants, ensuring that everything you need is just a short stroll away. This prime location combines the benefits of urban living with the comfort of a welcoming home.

In summary, this one-bedroom flat on Brighton Road is a fantastic opportunity for those looking to enjoy a spacious and well-connected living space in South Croydon. With its blend of comfort, convenience, and charm, it is certainly worth considering for your next home.

Nestled in the heart of South Croydon, this charming first-floor flat on Brighton Road offers a delightful living experience. Spanning an impressive 680 square feet, this one-bedroom property is both spacious and inviting, making it an ideal choice for individuals or couples seeking a comfortable home.

Upon entering, you will find a well-proportioned reception room that provides a perfect space for relaxation or entertaining guests. The flat is part furnished, allowing for a seamless transition into your new abode while still offering the flexibility to personalise the space to your taste. The bedroom is generously sized, ensuring a peaceful retreat at the end of the day.

The bathroom is conveniently located, providing all the necessary amenities for modern living. One of the standout features of this property is its excellent transport connections, making

- First floor flat, town centre
- Part furnished for convenience
- Good transport connections
- One reception room
- Ideal for city living
- Spacious one-bedroom layout
- Close to local amenities
- 680 sq ft of living space
- Modern bathroom
- Viewing recommended